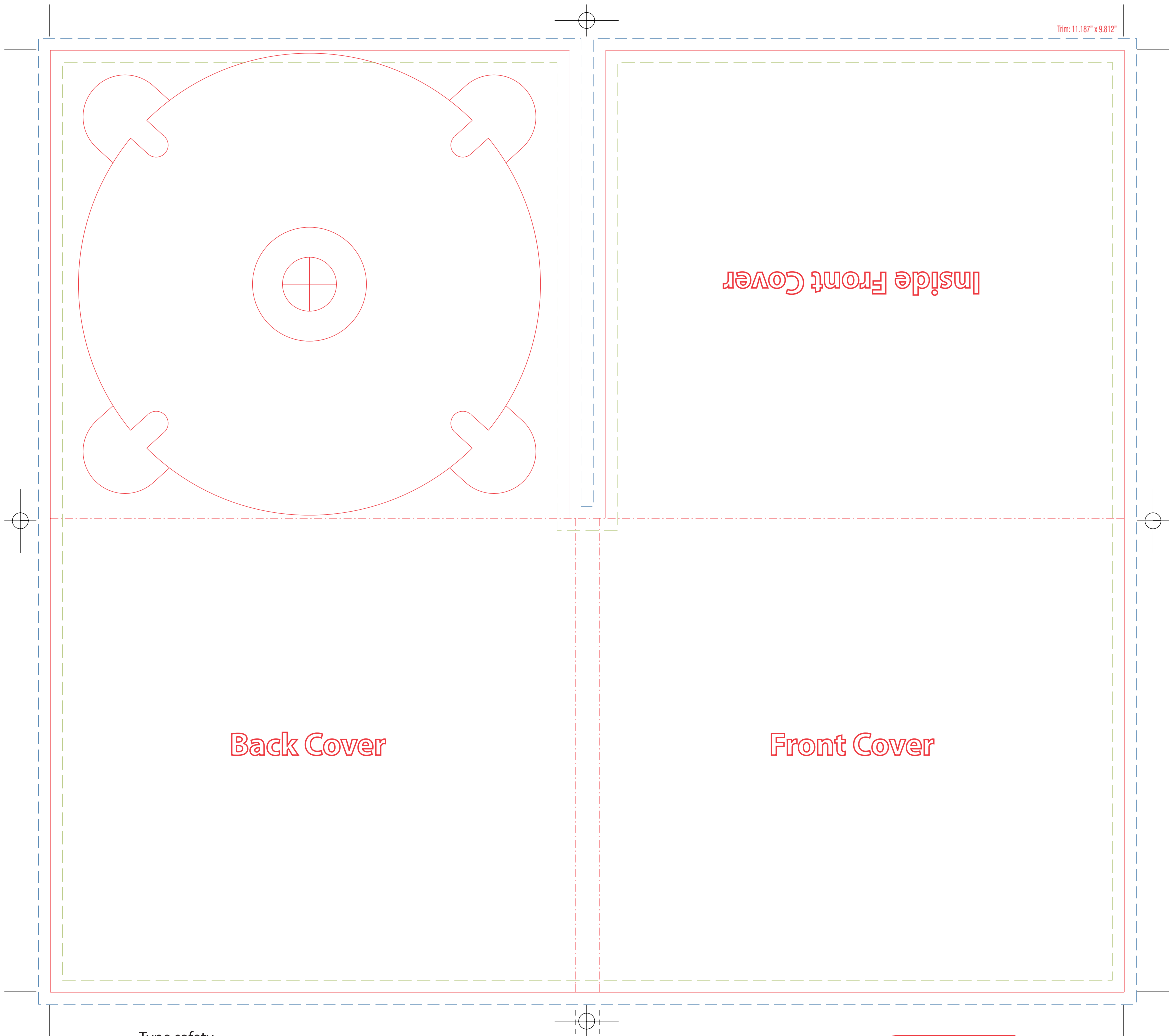


Trim: 11.187" x 9.812"



- Type safety
- Cut Line
- Bleed Area

**Note:** Any artwork that does not meet above requirement may be put on hold and cause a delay. Client will have to resubmit new file(s) or authorize SUPERLINK to perform artwork modification at extra cost.

\*Please do not place the template on top of your artwork when submit for production unless you want them to print on your final product.

