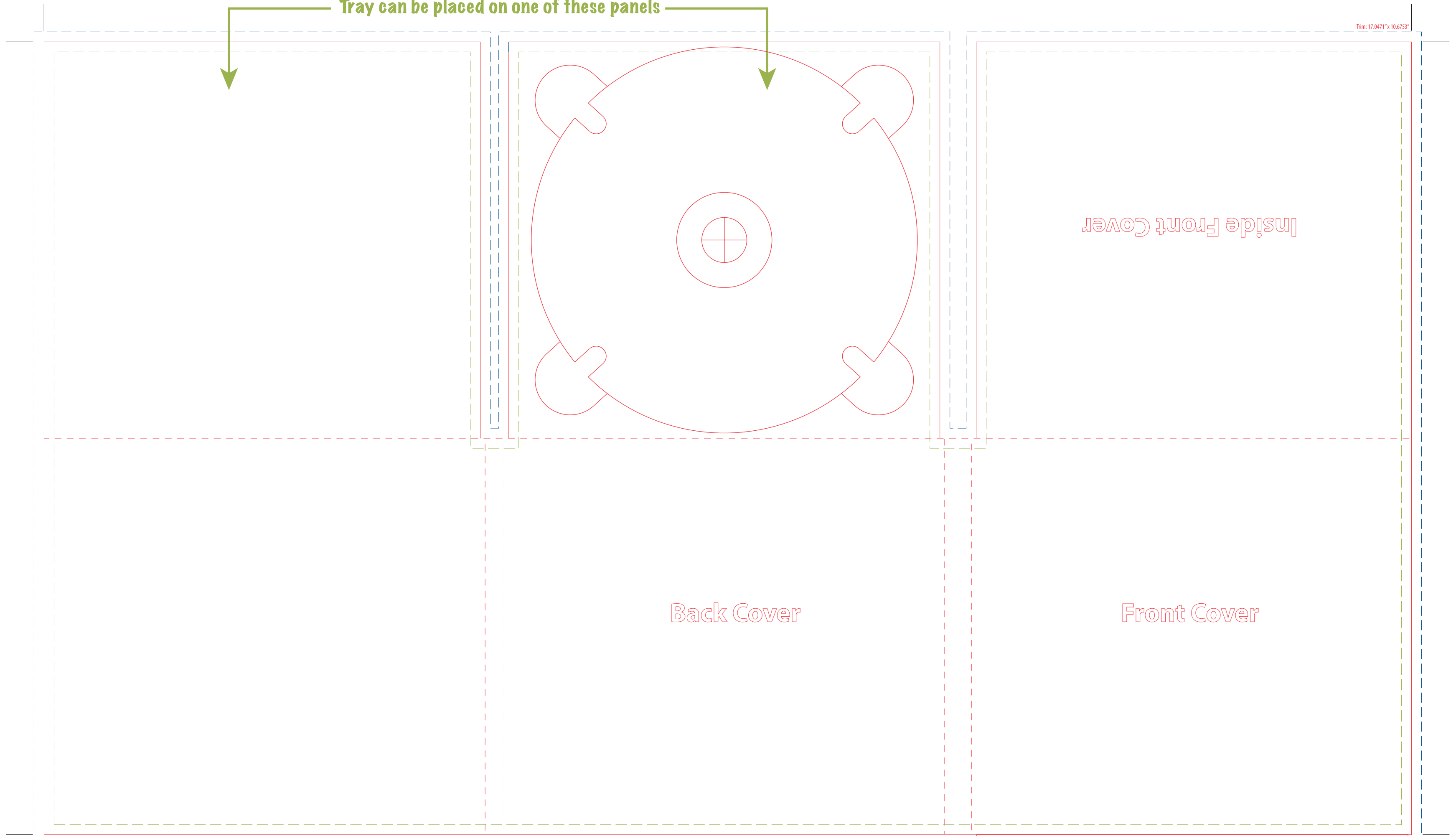


Tray can be placed on one of these panels

Trim: 17.0471" x 10.6753"



- Type safety
- Cut Line
- Bleed Area

Note: Any artwork that does not meet above requirement may be put on hold and cause a delay. Client will have to resubmit new file(s) or authorize SUPERLINK to perform artwork modification at extra cost.

*Please do not place the template on top of your artwork when submit for production unless you want them to print on your final product.

